

Figure 6.11

Escape plan work sheet

Instructions

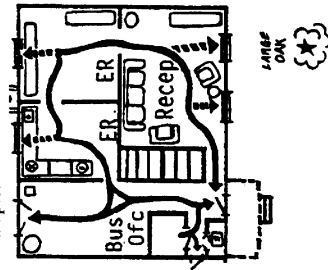
In a fire or emergency, you should be ready to get out fast.

Develop a simple-to-read escape plan by drawing a floor plan of your facility. Using a black pen, show the location of doors, windows, stairways, and large furnishings.

Indicate the location of fire extinguishers, smoke detectors, and first aid kits. Then use a colored pen to draw a broken line charting at least two escape routes from each section of the practice. Finally, mark a place outside of the facility where personnel should meet in case of fire.

Include the points outside where you'll meet. If your facility has more than two floors, use an additional sheet of paper.

Example:

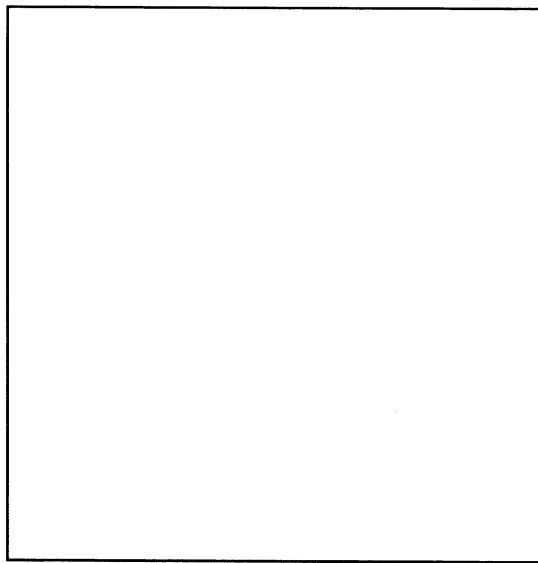


Escape plan

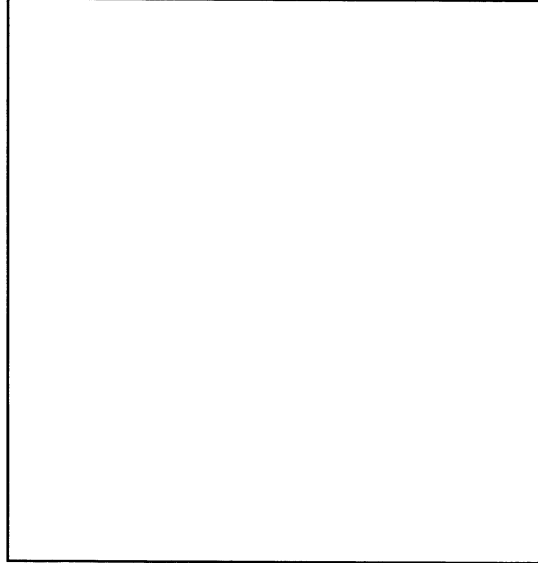
(Post this escape plan at busy points in your facility so that all personnel are familiar with it.)

Floor plan

Floor One



Floor Two



Use the symbols below to designate locations on the floor plans.

- | | | |
|-------------------|-----------------------|------------------|
| Normal Exit Route | Doors | Stairways |
| Fire Extinguisher | Disaster Supplies Kit | Utility Shut Off |
| Smoke Detectors | Collapsible Ladder | Windows |
| | Safe Refuge Area | First Aid Kit |